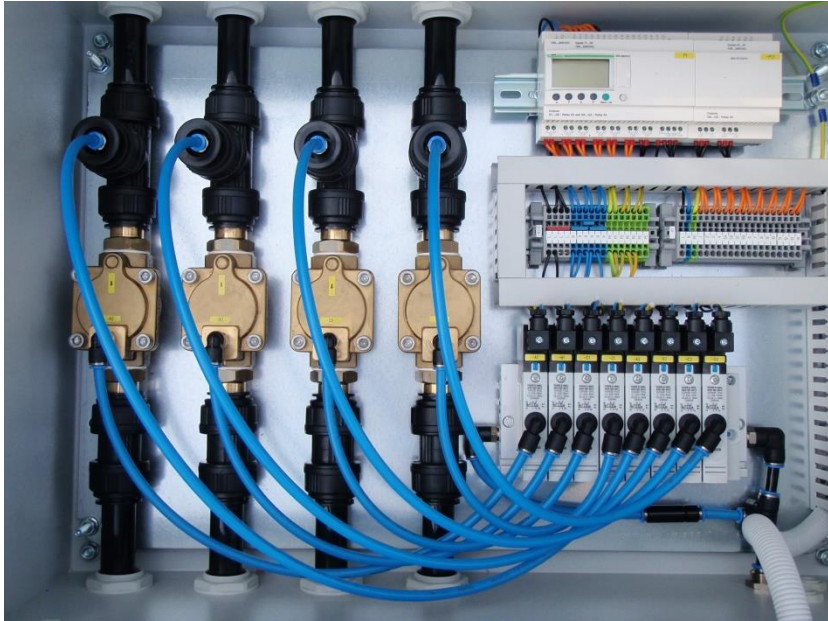


BlowOff Maintenance module for Aspiration Smoke Detector (ASD)



Improves economic efficiency and safety of ASD!

Aspiration Smoke Detectors (ASD) are highly sensitive sensors for early fire diagnosis in the modern fire prevention.

They are aspirating constantly air from production facilities and warehouses, therefore unwanted dust deposits in the sensor pipe's admission ports are inevitable which reduce the quality of surveillance.

BlowOff works in the background – blows automatically freely – and prevents among other things blockages of the admission ports:

- existing pollutions are removed, new deposits are prevented!
- continuous airflow to ASD is improved
- prevention of malfunction alerts

Advantages of BlowOff at a glance:

- compatible to all professional ASD equipment
- easy installation in very short time
- integrable and retrofitable, maintenance-free
- adjustable automatic cleaning intervals
- constant operational availability of ASD
- improved security for employees, goods, buildings and environment
- tested by **VdS** according to **EN 54 – 20** standard

Selected areas of application:

- heavy, automobile timber and chemical industry
- recycling industry, incineration plants
- suspended, closed ceilings and areas difficult to access like high bay warehouses

TECHNICAL DATA BlowOff

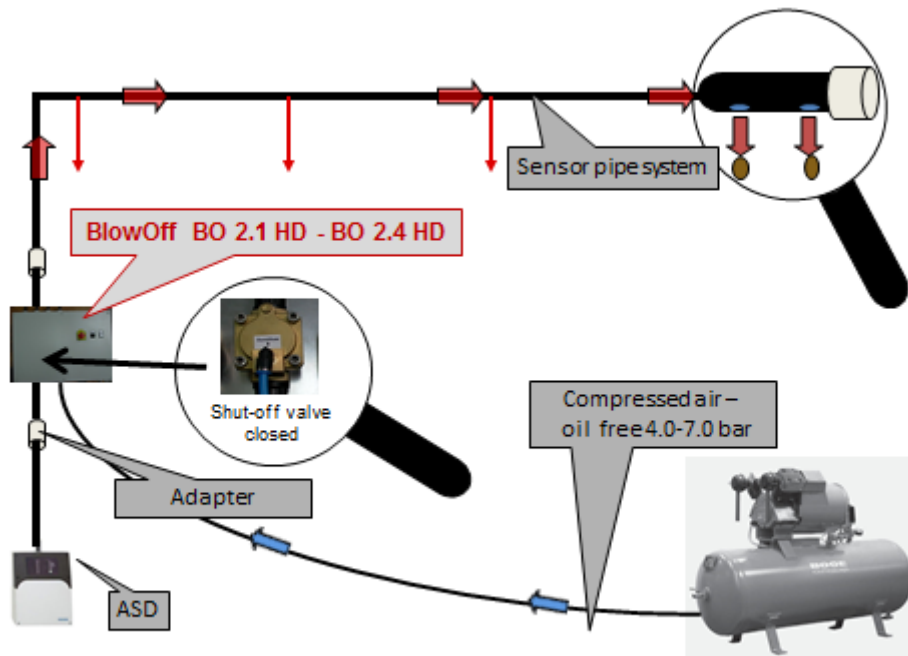


Figure : Air-blast process with **BlowOff**

Techconnet GmbH

Am Friedrichshain 22, D-10407 Berlin
Phone: +49 30 22199458 0 Fax: +49 30 22199458 20
info@techconnet.de; www.techconnet.de

Air-blast module	compatible with all current Aspiration Smoke Detectors with 1 to 4 sensor pipes, retrofitable
Casing	metal / RITTAL / IP 65 / RAL 7035 structured
Elektrical connection	230 V AC
Valves	elektronic (FESTO) – operating and air-blasting pneumatic (FESTO) – Backbone
Compressed air connection	max. 7.0 bar, using a quick compressed air coupling, oil-free and dry
Pipe connection	easily accessible from outside /quick to install
Sensor pipe/suction pipe	28 mm Ø outside / Adapter to 25 mm available
Input contacts	1. unscheduled air-blast 2. deactivate air-blast
Output contacts	1. signal contact to the ASD 2. output contact to the ASD 3. control of compressed-air (optional)
Protection class	IP 65 standard version protection against contact with voltage-carrying parts, protection against ingress of dust and water jet
Operating temprature	from -20° C to +40° C with heating (optional)
Assembly	simple wall mounting with external brackets (4 mounting holes with M8-dowels)
Dimensions	W x H x D 700 x 500 x 250 mm
Installation	dedicated for usage inside of buildings, normal environmental conditions without acidic ambient air
Control	SPS – autotimer (Schneider) - user manuel separately
Air-blast times	pre-programmed at the factory: 4 times per day (1:00 am, 7:00 am, 1:00 pm, 7:00 pm) or in individual intervals
Optionally:	
Cabinet heating	adjustable, mounted inside of the casing with thermostat
Control of compressed air	control, whether pressure is applied